

The background of the slide is a photograph of dense green foliage. In the center, there is a large, light green, heart-shaped leaf that is slightly curled. The text is overlaid on this central leaf and the surrounding branches.

Te Kāhui Tāwharautanga o Ngā Rongoā

**Haere mai tatou Katoa
Ki te awhina ki nga kaupapa
Hei oranga mo tatou katoa
Raphia i raro i te maru o Ihowa e**

**Te Kotahitanga ra e
Mo te iwi Maori e aue
Kei raro i te maru o Ihowa e
Kei raro i te maru o Ihowa e**

**Ka tutuki nga wawata
Ki te rangimarie aue
Ko te huarahi kei te wairua
Ko te huarahi kei te wairua**

**Te Tiriti o Waitangi
He oranga Maori e aue
Pupungia kia piri tatou katoa
Pupungia kia piri tatou katoa**

Tuini Ngawai 1950



NGA WHAKATAU

1. Te kotahitanga i raro i te kaupapa kotahi, whanau kotahi.	Whakaae katoa tatou Kua mana
2 (a) Te whakatau ingoa mo te whare hou: “Te Kāhui Tāwharautanga o Ngā Rongoā” 2 (b) “Te Kāhui Rongoā” (Te Tongi o te Tari)	Ae 31 Kaore 8 Kaore ano kia mohio 1 Kua mana Ae 34 Kaore 5 Kaore ano kia mohio 1 Kua mana
3. Te hanga o te whare hou	Whakaae katoa tatou Kua mana
4. Ma te roopu iti hei whakaoti i nga mahi	“Whakahokia atu te mana whakahaere ki nga rohe” Ae 31 Kaore 0 Kaore ano kia mohio 9 Kua mana

I Konei	Kaore i konei
Nga Wai Ariki	Te Waipounamu
Tairawhiti	Te Upoko o Te Ika
Te Tau Ihu	
Tainui	
Taranaki	
Whanganui	
Ngapuhi Nui Tonu	
Kahungunu	

ROHE

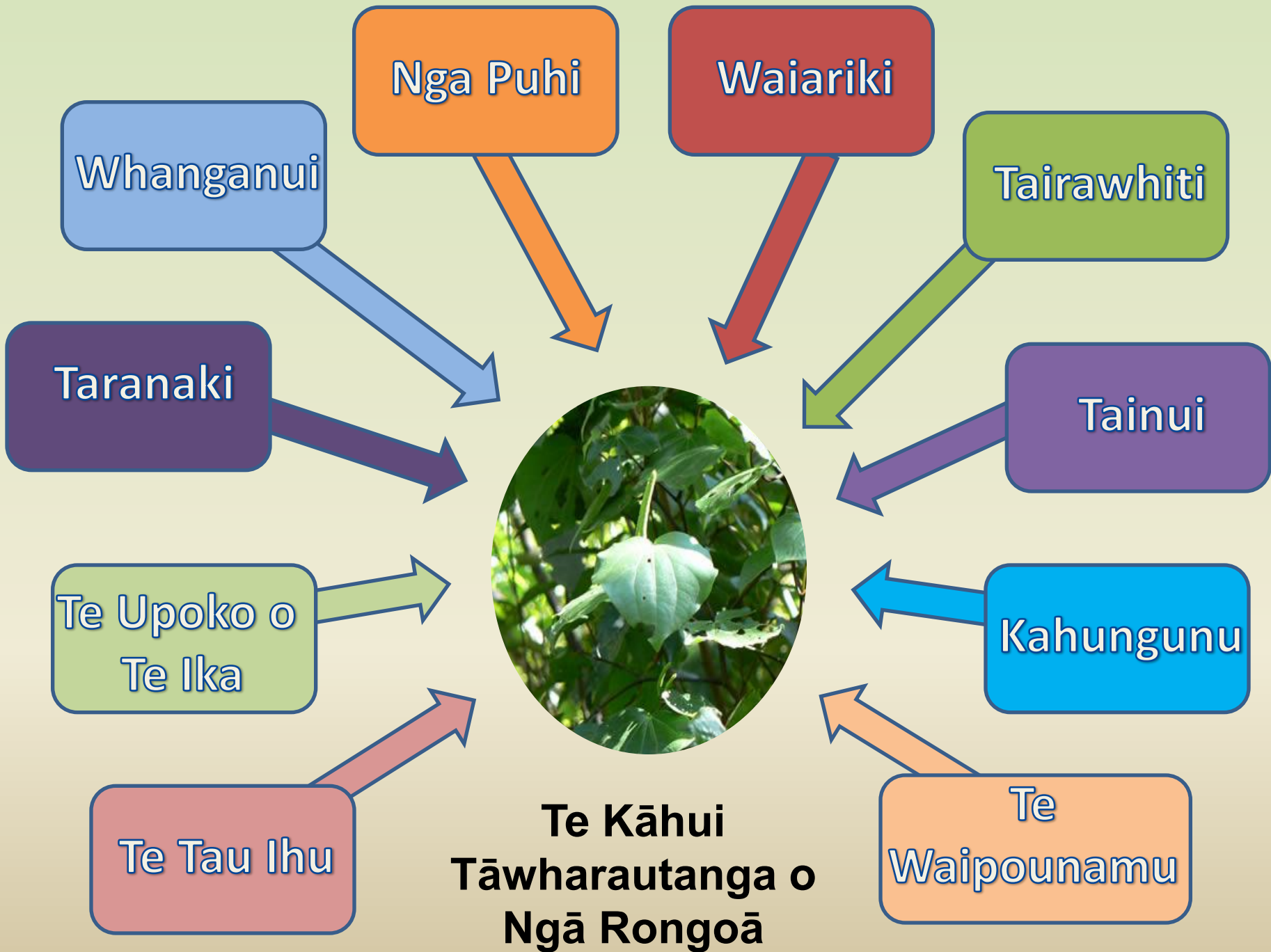
```
graph TD; ROHE[ROHE] --> PaeWhenua[Pae Whenua]; ROHE --> PaepaeMatua[Paepae Matua]; ROHE --> PaepaeMahi[Paepae Mahi]; PaeWhenua --> NgaTikanga((Nga Tikanga mo Rongoa)); PaepaeMatua --> NgaTikanga; PaepaeMahi --> NgaTikanga;
```

Paepae
Matua

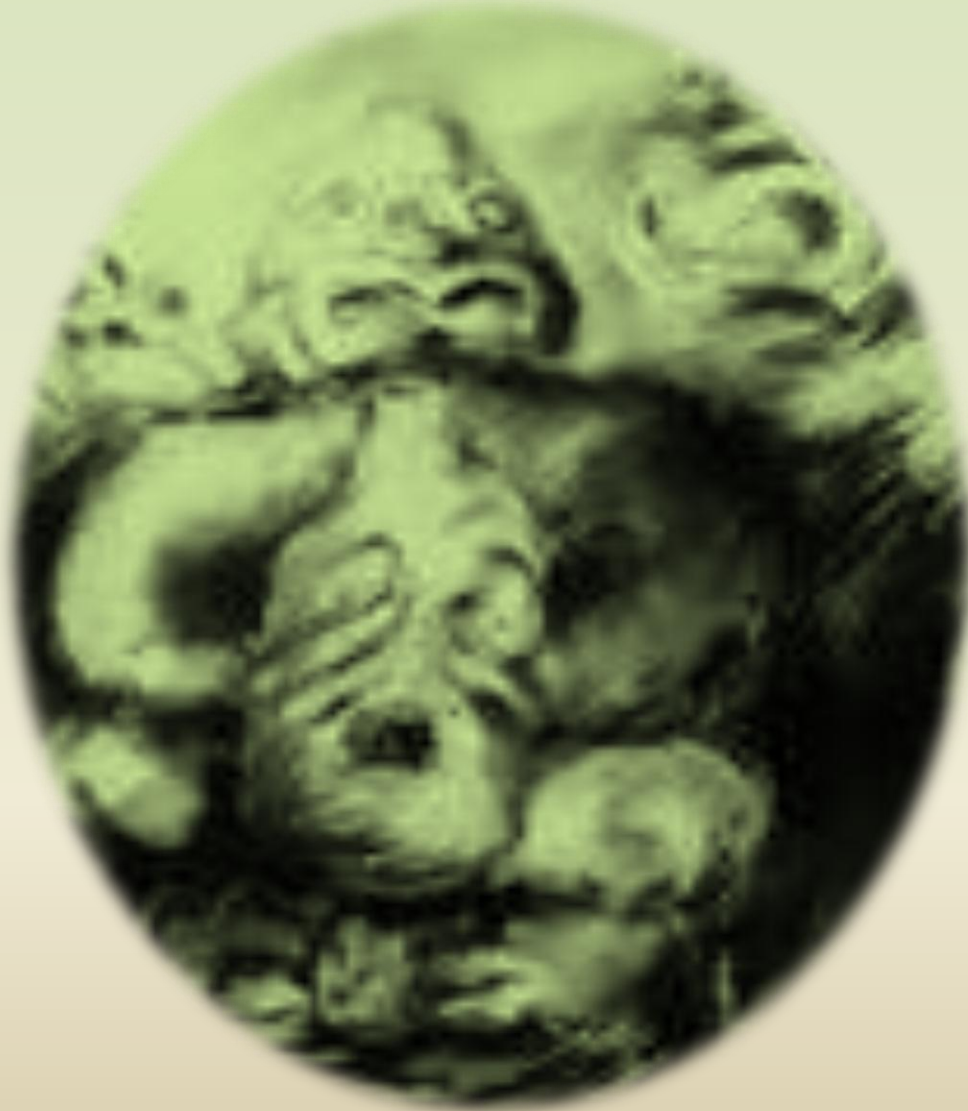
Pae
Whenua

Paepae
Mahi

Nga
Tikanga
mo
Rongoa



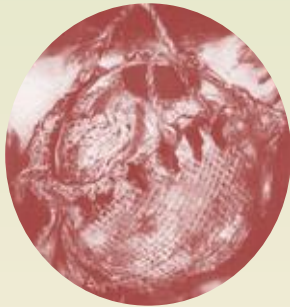
Kaitiaki a Ture



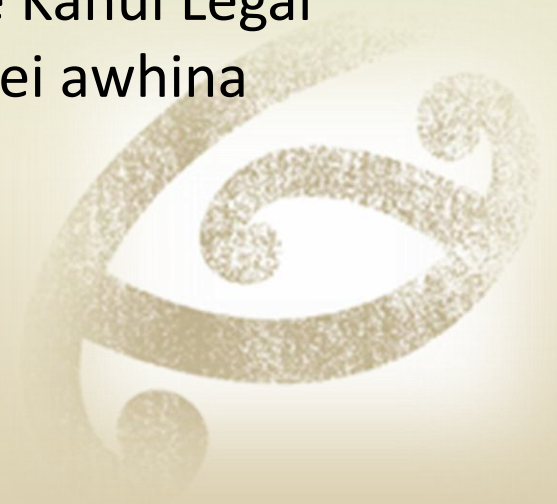
- Ma nga Kaimahi a Ture me te reo o nga Paepae Matua a Rohe hei whakatu i te roopu tika mo tenei turanga mahi
- Ma Te Kahui Legal tatou hei awhina



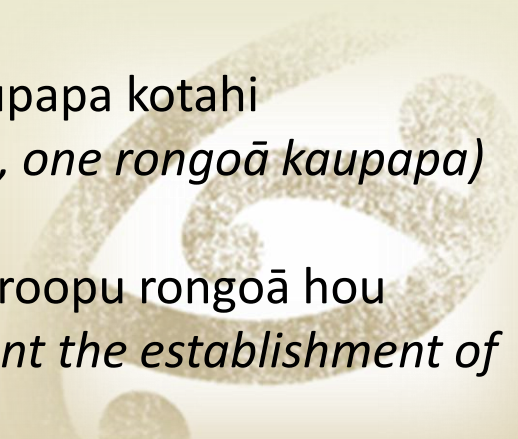
Kaimahi a Tari



- Ma nga Kaitiaki a Ture me te reo o nga Paepae Matua a Rohe hei whakatu i te roopu tika mo tenei turanga mahi
- Ma Te Kahui Legal tatou hei awhina



KO NGĀ MAHI HEI WHAKAOTI

- Whakatū whānau rongoā hou i raro i te ture tikanga
(Establish a new legal entity)
 - Whakawhiti ngā rauemi katoa o ngā whānau e rua ki te roopu rongoā hou
(Transfer assets, contracts etc to the new legal entity)
 - Whakakorengia ngā roopu e rua
(Wind up of two entities)
 - Whakanui te whanaketanga o te whānau kotahi, kaupapa kotahi
(Celebrate the establishment of one rongoā whānau, one rongoā kaupapa)
 - Whakarite tonu e te roopu iti te whanaketanga o te roopu rongoā hou
(Continuation of the small working group to implement the establishment of the new entity)
- 



KA MAU TE WEHI